

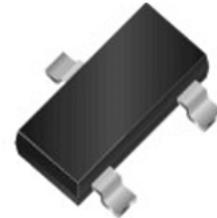
## Description

The XE23T5VU is a bi-directional ESD protection diode designed to protect sensitive electronic components which are connected to low speed data lines and control lines from over-stress caused by ESD (Electrostatic Discharge), EFT (Electrical Fast Transients) and Lightning.

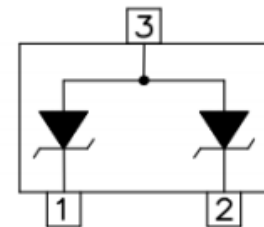
The XE23T5VU may be used to provide ESD protection up to  $\pm 30\text{kV}$  contact and  $\pm 30\text{kV}$  air discharge) according to IEC61000-4-2, and withstand peak pulse current up to 18A (8/20 $\mu\text{s}$ ) according to IEC61000-4-5.

The XE23T5VU is available in SOT-23 package. Standard products are Pb-free and Halogen-free.

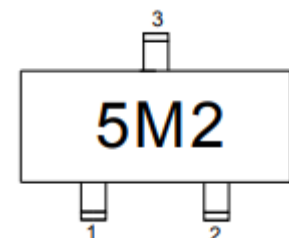
<http://www.xihangsemi.com>



**SOT-23**



**Circuit Diagram**



**Marking (Top View)**

## Features

- ◆ Working voltage: 5V
- ◆ SOT-23 Package
- ◆ Transient protection for data lines to IEC61000-4-2 (ESD)  $\pm 30\text{kV}$  (air),  $\pm 30\text{kV}$  (contact)  
IEC61000-4-5 (Surge) 18A (8/20 $\mu\text{s}$ )  
IEC61000-4-4 (EFT) 40A (5/50ns)
- ◆ Low leakage current
- ◆ Low clamping voltage
- ◆ Solid-state silicon-avalanche technology

## Order Information

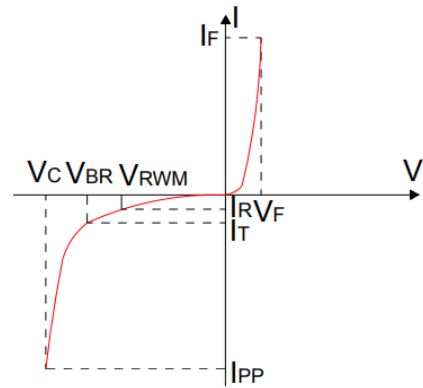
Device	Package	Shipping
XE23T5VU	SOT-23	3000/Tape&Reel

## Applications

- ◆ Subscriber identify module (SIM) card protection
- ◆ Wireless bus protection
- ◆ Control & monitoring systems
- ◆ Portable electronics
- ◆ Servers, notebook and desktop
- ◆ Cellular handsets and accessories

## Definitions of electrical characteristics

Symbol	Parameter
$V_{RWM}$	Reverse Stand-off Voltage
$I_R$	Reverse Leakage Current @ $V_{RWM}$
$V_{BR}$	Reverse Breakdown Voltage @ $I_T$
$I_R$	Reverse Breakdown Current
$I_{PP}$	Reverse Peak Pulse Current
$V_C$	Clamping Voltage @ $I_{PP}$



## Absolute Maximum Rating

Rating	Symbol	Value	Units
Peak Pulse Power ( $t_P = 8/20\mu S$ )	$P_{PK}$	300	W
Peak Pulse Current ( $t_P = 8/20\mu S$ )	$I_{pp}$	18	A
ESD according to IEC61000-4-2 air discharge	$V_{ESD}$	$\pm 30$	kV
ESD according to IEC61000-4-2 contact discharge		$\pm 30$	kV
Lead Soldering Temperature	$T_L$	260 (10 sec)	$^{\circ}C$
Operating Temperature	$T_{OP}$	-55 to +125	$^{\circ}C$
Storage Temperature	$T_{STG}$	-55 to +150	$^{\circ}C$

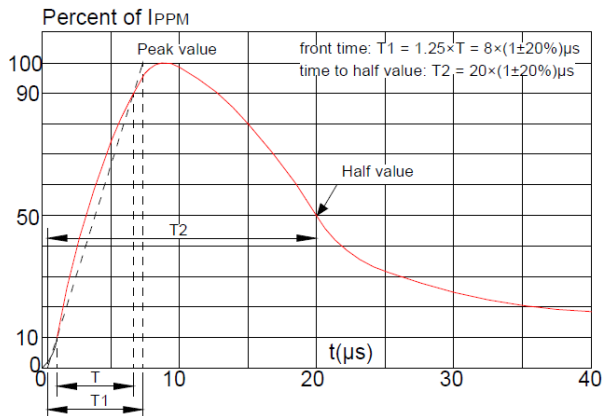
## Electrical Characteristics ( $T_a=25^{\circ}C$ , unless otherwise noted)

Parameter	Symbol	Conditions	Min.	Typ.	Max.	Units
Reverse Stand-off Voltage	$V_{RWM}$				5	V
Reverse Leakage Current	$I_R$	$V_{RWM}=5V$			1	$\mu A$
Reverse Breakdown Voltage	$V_{BR}$	$I_T=1mA$	5.5		9.5	V
Clamping Voltage <sup>1)</sup>	$V_{CL}$	$I_{PP}=1A$ $t_P = 8/20\mu s$			9.8	V
		$I_{PP}=18A$ $t_P = 8/20\mu s$			16.7	V
Junction Capacitance	$C_j$	$V_R=0V$ $f = 1MHz$		150	180	pF

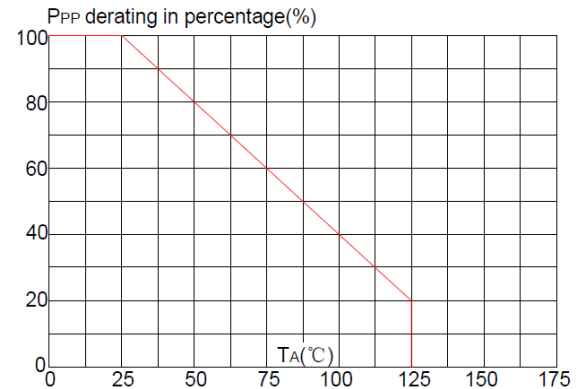
Notes:

1)Non-repetitive current pulse, according to IEC61000-4-5.

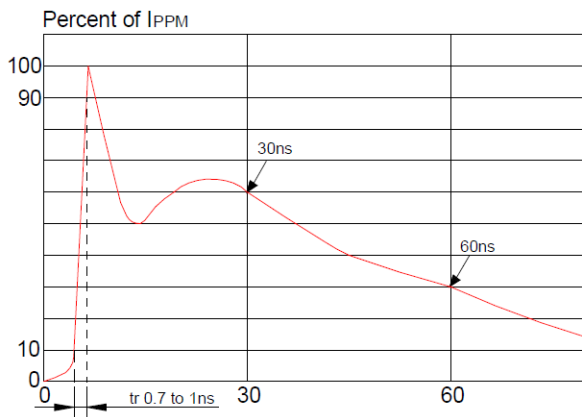
## Typical Characteristics (Ta=25°C, unless otherwise noted)



**Pulse Waveform (8/20us)**

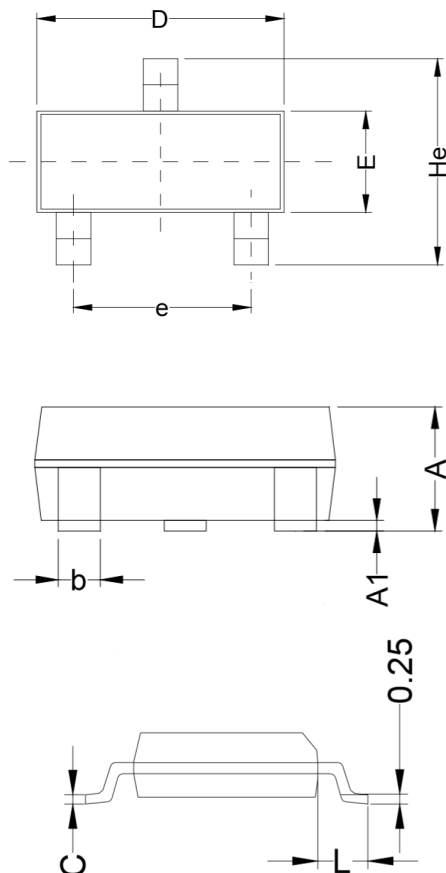


**Pulse Derating Curve**



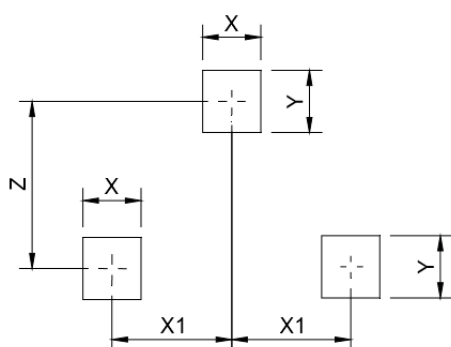
**ESD Clamping(8kV Contact Discharge )**

## Package Outline Dimensions (SOT-23)



Symbol	Millimeters		Inches	
	Min.	Max.	Min.	Max.
A	0.90	1.15	0.035	0.045
A1	0.00	0.10	0.000	0.004
b	0.25	0.325	0.010	0.013
C	0.22	0.25	0.009	0.010
D	2.80	3.00	0.110	0.118
E	1.80	1.90	0.071	0.075
E	1.20	1.40	0.047	0.055
L	0.30	0.50	0.012	0.020
He	2.25	2.25	0.089	0.100
X	0.80		0.031	
X1	0.95		0.037	
Y	0.80		0.031	
Z	2.02		0.080	

## Recommend Land Pattern (Unit: mm)



Note: This recommended land pattern is for reference purpose only.

### NOTICE

XIHANG's products are not authorized for use as components in any life support device or systems.

XIHANG reserves the right to make modifications, enhancements, improvements, corrections or other changes without further notice to any product herein. XIHANG does not assume any liability arising out of the application or use of any product described herein.