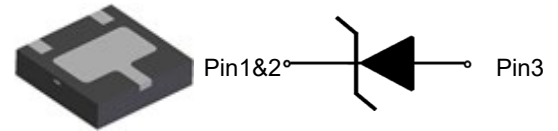


Description

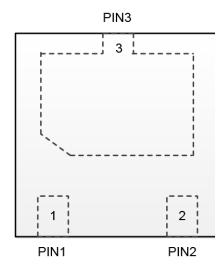
The XT3P30VU diode is designed to replace multilayer varistors (MLVs) in portable applications such as cell phones, notebooks, and PDA's. It offers superior electrical characteristics such as low clamping voltage, low leakage current and high surge capability. It is designed to protect sensitive electronic components which are connected to power lines, from over-stress caused by ESD (Electrostatic Discharge), EFT (Electrical Fast Transients) and Lightning.

The XT3P30VU is in a DFN2020-3L package and will protect one unidirectional line. It may be used to provide ESD protection up to $\pm 30\text{kV}$ (Contact and air discharge) according to IEC61000-4-2 , and withstand peak pulse current up to 180A (8/20 μs) according to IEC61000-4-5.

<http://www.xihangsemi.com>



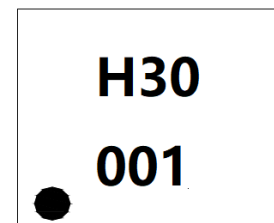
DFN2020-3L



Pin Configuration (Bottom View)

Features

- ◆ Working voltage: 30V
- ◆ DFN2020-3L Package
- ◆ 7000 Watts peak pulse power ($t_p=8/20\mu\text{s}$)
- ◆ Transient protection for data lines to
IEC 61000-4-2 (ESD) $\pm 30\text{kV}$ (air),
 $\pm 30\text{kV}$ (contact)
IEC 61000-4-5 (Surge) 180A (8/20 μs)
IEC61000-4-4 (EFT) 40A (5/50ns)
- ◆ Low leakage current
- ◆ Low clamping voltage
- ◆ Solid-state silicon-avalanche technology



Marking

Applications

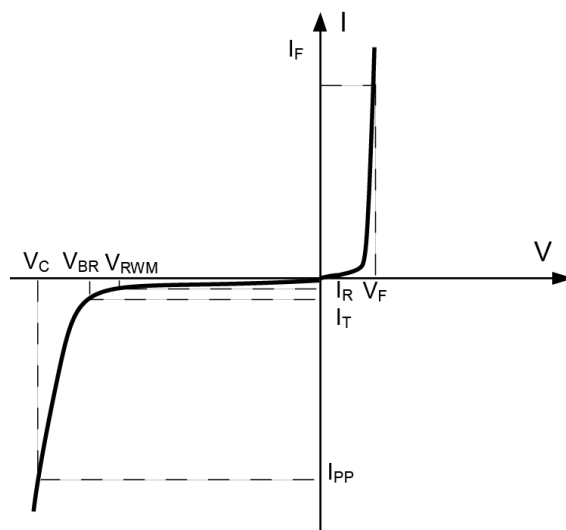
- ◆ Power lines
- ◆ Personal digital assistants (PDA's)
- ◆ Microprocessors based equipment
- ◆ Notebooks, Desktops, and Servers
- ◆ Cell phone Handsets and Accessories
- ◆ Portable Electronics
- ◆ Peripherals

Order Information

Device	Package	Shipping
XT3P30VU	DFN2020-3L	3000/Tape&Reel

Definitions of electrical characteristics

Symbol	Parameter
V_{RWM}	Reverse Stand-off Voltage
I_R	Reverse Leakage Current @ V_{RWM}
V_{BR}	Reverse Breakdown Voltage @ I_T
I_T	Test Current
I_{PP}	Reverse Peak Pulse Current
V_C	Clamping Voltage @ I_{PP}
I_F	Forward Current
V_F	Forward Voltage @ I_F
C_j	Junction Capacitance
I_{PP}	Peak Pulse Current



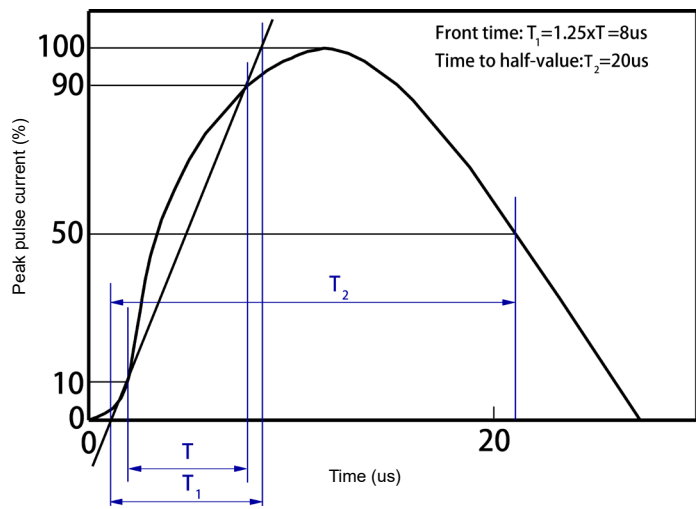
Absolute Maximum Rating

Rating	Symbol	Value	Units
Peak Pulse Power ($t_P = 8/20\mu S$)	P_{PK}	7000	W
Peak Pulse Current ($8/20 \mu s$)	I_{pp}	180	A
ESD according to IEC61000-4-2 air discharge	V_{ESD}	± 30	kV
ESD according to IEC61000-4-2 contact discharge		± 30	kV
Operating Temperature	T_{OP}	-55 to +125	$^{\circ}C$
Storage Temperature	T_{STG}	-55 to +150	$^{\circ}C$

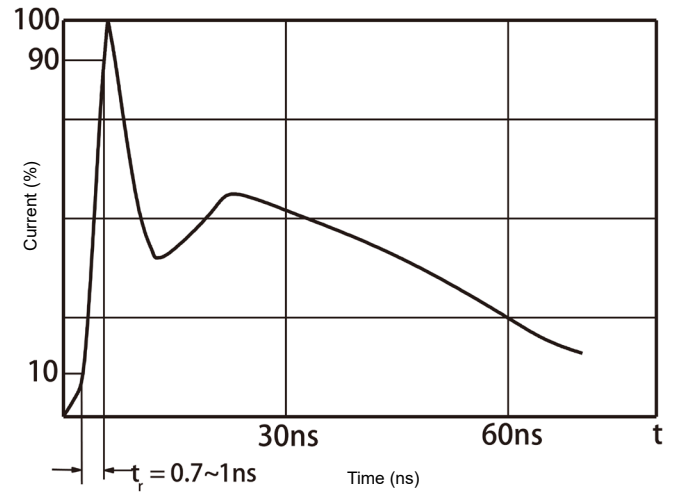
Electrical Characteristics ($T_a=25^{\circ}C$, unless otherwise noted)

Parameter	Symbol	Conditions	Min.	Typ.	Max.	Units
Reverse Stand-off Voltage	V_{RWM}				30	V
Reverse Breakdown Voltage	V_{BR}	$I_T = 1mA$	31		35	V
Reverse Leakage Current	I_R	$V_{RWM}=30V$			0.5	μA
Clamping Voltage	V_C	$I_{PP}=180A$ $t_P = 8/20\mu s$		38	42	V
Junction Capacitance	C_j	$V_R=0V$ $f = 1MHz$		550		pF

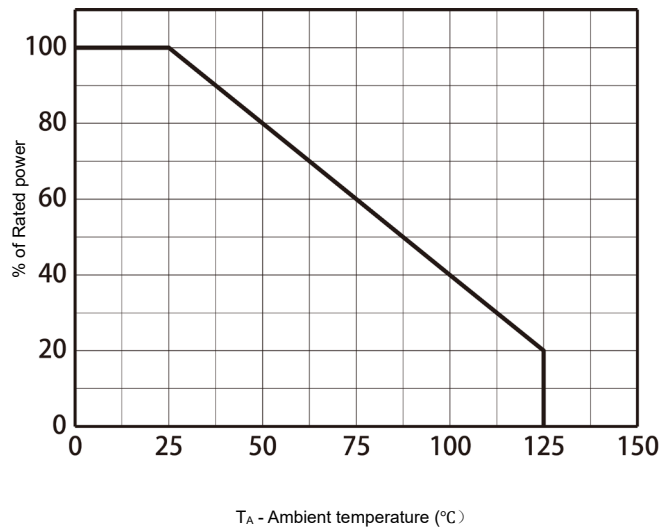
Typical Characteristics (Ta=25°C, unless otherwise noted)



8/20 us waveform per IEC61000-4-5

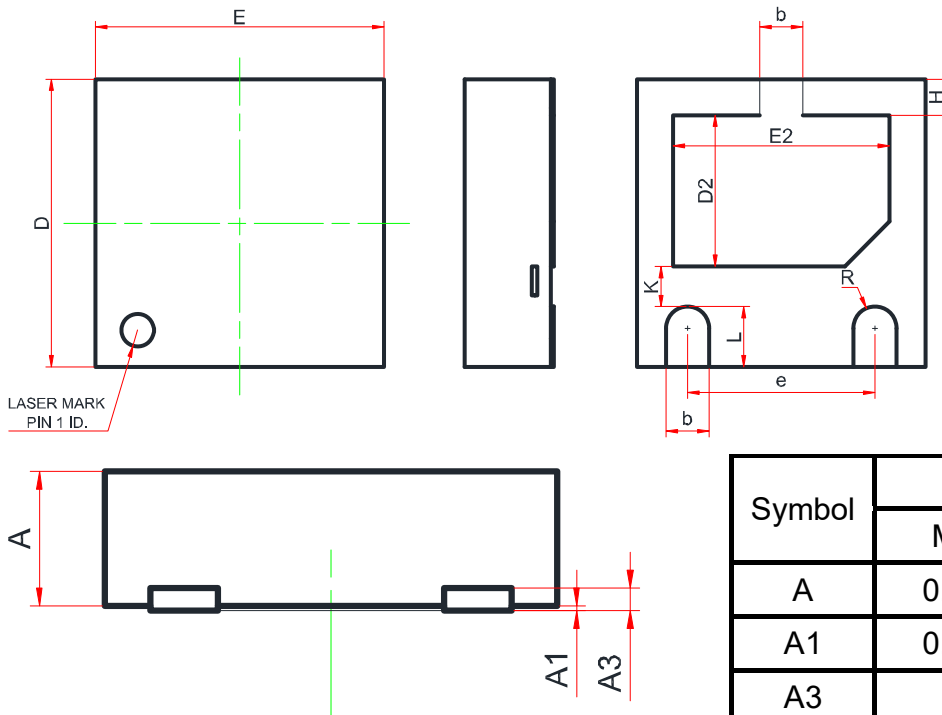


Contact discharge current waveform per IEC61000-4-2

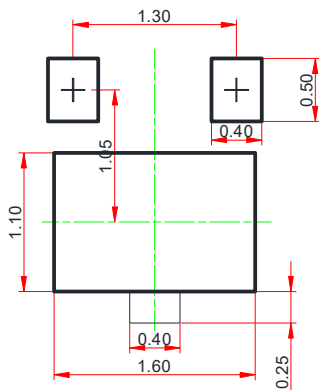


Non-repetitive peak pulse power vs. Pulse time

Package Outline Dimensions (DFN2020-3L)

DFN2.0×2.0-3L


Recommend Land Pattern (Unit: mm)



Note:

This recommended land pattern is for reference purpose only.

Symbol	Dimensions In Millimeters		
	Min.	Typ.	Max.
A	0.51	0.55	0.60
A1	0.00	0.02	0.05
A3	0.15 REF.		
b	0.25	0.30	0.35
D	1.90	2.00	2.10
E	1.90	2.00	2.10
D2	0.85	1.00	1.10
E2	1.35	1.50	1.60
e	1.20	1.30	1.40
H	0.20	0.25	0.30
K	0.20	0.30	0.40
L	0.35	0.40	0.45
R	0.15	-	-

NOTICE

XIHANG's products are not authorized for use as components in any life support device or systems.

XIHANG reserves the right to make modifications, enhancements, improvements, corrections or other changes without further notice to any product herein. XIHANG does not assume any liability arising out of the application or use of any product described herein.